



T-10 Adjustment to case size

The SOCO SYSTEM case sealers are easy to adjust to new case sizes.



T-10 case sealer for the hard job

Top and bottom closure.

Very sturdy case sealer for round-the-clock applications and high requirements.

Also available in stainless steel, e.g. for the food industry where machines are required that are easy to clean and maintain in order to meet the increasing demand for hygiene.

Basic models

T-10 and T-10 Maxi (see table). Both models are available with extra high pillars. T-10 Maxi is especially suitable in industries where large cases are handled. In its standard version, the T-10 Maxi is fitted with a 75 mm dispenser with 70 mm tape overlap.

- Easy to adjust for different case sizes.
- Easy tape and dispenser replacement.
- Strong and compact design.
- Easy to maintain with low maintenance and spare parts costs.
- Electro-galvanised or stainless steel finish.

[Machine Dimensions](#)

Build your own case sealer - Click the configurator tab!

Item no.

Model examples (use the configurator to design your specific model)	Item no.	Quantity
T-10 5-5-7	435646713	<input type="text" value="0"/>
T-10 5-8-7	435646913	<input type="text" value="0"/>
T-10 7-5-7 Maxi	435642173	<input type="text" value="0"/>
T-10 7-8-7 Maxi	435642373	<input type="text" value="0"/>

All measurements are in mm. Subject to alteration.

Specifications

Specifications	T-10 5-5-7	T-10 5-8-7	T-10 Maxi 7-5-7	T-10 Maxi 7-8-7
Case dimensions*				
Max. (LxWxH) mm	∞ x 515 x 505	∞ x 515 x 815	∞ x 725 x 505	∞ x 725 x 815
Min. (LxWxH) mm	140 x 90 x 80/120**	140 x 90 x 80/120**	140 x 140 x 110/150**	155 x 140 x 110/150**



Specifications	T-10 5-5-7	T-10 5-8-7	T-10 Maxi 7-5-7	T-10 Maxi 7-8-7
Tape overlap				
70 mm	●	●	●	●
50 mm	○	○	○	○
Tape width				
25 - 30 mm	○	○	○	○
38 - 50 mm	●	●	○	○
50 - 75 mm	○	○	●	●
Side drives				
Height 50 mm	●	●	○	○
Height 80 mm	○	○	●	●
Working height max./min.				
920 - 820 mm	○	○	○	○
820 - 720 mm	○	○	○	○
720 - 620 mm	●	●	●	●
620 - 520 mm	○	○	○	○
520 - 420 mm	○	○	○	○
Weight kg	165	165	170	170
Capacity*	Max. 30/ min.			
Electric specifications	3 x 230/400 V, 50-60 Hz, or 3 x 415/460 V, 50-60 Hz. Connected load 0.3 kW. Other specifications available upon request.			
Tape diameter	Max. 385 mm.			

● Standard ○ Optional

* Depending on the construction and quality of the case. ** Without or with side pressure rollers.

Subject to alteration.

Accessories



3-flap-folder for case sealers T-10 and T-100

The 3-flap folder facilitates the feed-in of cases.

Call for price

[VIEW MORE](#)



Tape dispensers for case sealers - infeed from the right

For case sealers where boxes come from the righthand hand

Call for price

[VIEW MORE](#)



Spare parts for tape dispensers

The tape dispenser is the heart of a case sealer.

Call for price

[VIEW MORE](#)



Braked castors

SOCO SYSTEM machines and supports are prepared for the

Call for price

[VIEW MORE](#)



Resilient pillar stop

Suitable where the cases are slightly overfilled, and the top

Call for price

[VIEW MORE](#)



Tape alarm for case sealer models T-10, T-55, T-400, T-402

The tape alarm checks that the cases are sealed with tape on

Call for price

[VIEW MORE](#)



Pillar for side drives for case sealers for uniform case sizes

Raised side drive is used for high short cartons in particular.

Call for price

[VIEW MORE](#)

Related products



FT-10 – Flap closer

Manual height and width adjustment.

Call for price

[VIEW MORE](#)



Inline system for case sealers

Offers an efficient and ergonomically correct working

Call for price

[VIEW MORE](#)

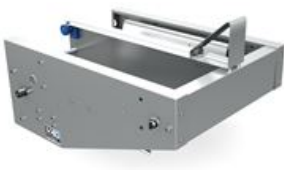


Boomerang packaging system for case sealers

The boomerang system is ideal as a "one-man packing station"

Call for price

[VIEW MORE](#)



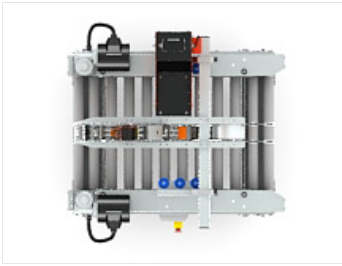
F-100 – Semi automatic case erector and packaging table

Often used as packing table before a case sealer.

Call for price

[VIEW MORE](#)

Configurator



Machine type

Please select desired machine base type.

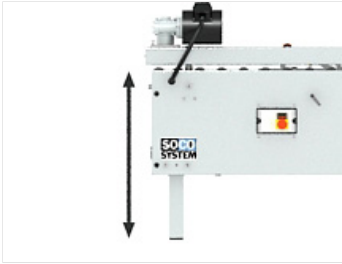
Machine type	Description
T-10 X-X-X	Electro galvanized / Powder coated
T-10 X-X-X	Stainless / Powder coated



Case dimensions

Length x width x height (mm)

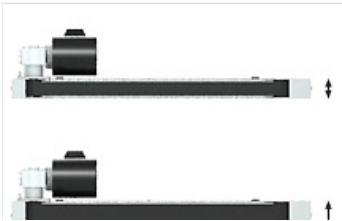
Case dimensions (L x W x H) in mm	Remarks
Min.: 140x90x80/120 - Max.: ∞x515x505	5-5
Min.: 140x90x80/120 - Max.: ∞x515x815	5-8
Min.: 140x140x110/150 - Max.: ∞x725x505	7-5
Min.: 155x140x110/150 - Max.: ∞x725x815	7-8



Working height

The desired working height determines which size legs will be mounted on the case sealer. The standard height is between 620-720 mm.
Please note!
Do not forget to take into account if the machine is to be mounted with braked castors. This will increase the height by 140 mm.

Working height	Remarks
420 mm - 520 mm	5
520 mm - 620 mm	6
620 mm - 720 mm	7
720 mm - 820 mm	8
820 mm - 920 mm	9



Height of side drives

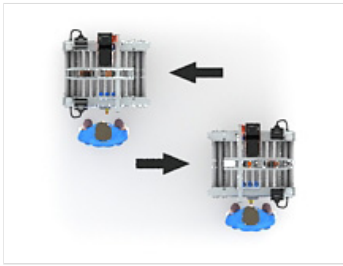
You can choose 80 mm side drives instead of 50 mm on the standard machine. It is, e.g., usefull if the cases are high or heavy. Use 80 mm if the case is short and high and/or if the case is heavier than 20 kg.



Drives

50 mm

80 mm



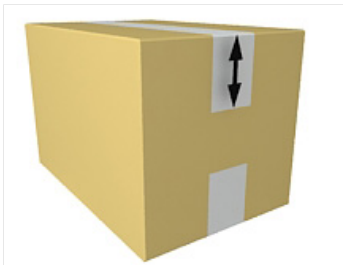
Infeed direction

The standard case sealer is a machine with infeed direction from right to left (seen from the view of the operator). The opposite hand machine is a machine with infeed from left to right.

Infeed direction

Right

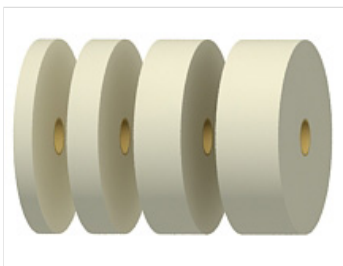
Left



Dispenser - tape overlap

Choose between 50 mm og 70 mm tape overlap. A longer tape overlap is preferred when the content of the case is heavy - a long tape overlap will strengthen the closure.

Tape overlap	Remarks
50 mm	
70 mm	



Dispenser - tape width

Depending on the job, it might be usefull to choose a wide tape. A wide tape is, e.g., preferred when the content of the case is heavy - a wide tape will strengthen the closure preventing the content from falling out through the bottom flaps.

Tape width	Remarks
25 - 30 mm	30
38 - 50 mm	50
50 - 75 mm	75



Electricity

Choose electrical specifications.

Electrical specifications	Hz	Remarks	Capacitor
1x230 V	60 Hz		10/4 uF
1x230 V	50 Hz		16/5 uF
3x230 V	50 Hz		
3x400 V	50 Hz		
3x415 V	50 Hz	AU/GB	
3X460 V	60 Hz		
1X240 V	50 Hz	GB	12/4 uF
1X110 V/120 V	60 Hz	C.S.A	40/16 uF
3X230 V	60 Hz		

Item number: 435645150

Add to Wishlist