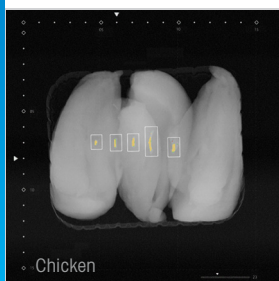
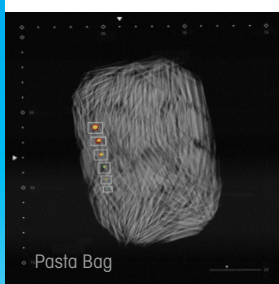


Advanced Dual Energy Technology



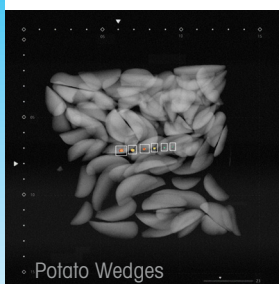
Unrivalled Detection

The DXD+ detector offers remarkable detection capability for low-density contaminants like calcified bone, glass and rubber, to enhance product integrity and support brand protection.



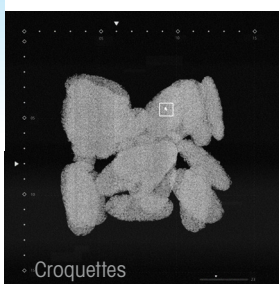
Optimized For Challenging Applications

Products that overlap or have an uneven texture are a great match for our dual energy detectors. The DXD+ detector virtually eliminates product noise, making contaminants easier to see.



Intuitive, User-friendly Software

Powered by proprietary Advanced Material Discrimination algorithms, DXD+ detectors deliver significantly improved detection capabilities with automated product set-up.



Flexibility to Suit Production Demands

The X36 DXD+ offers a range of configurations, which can be customized to suit challenging applications and meet business requirements.

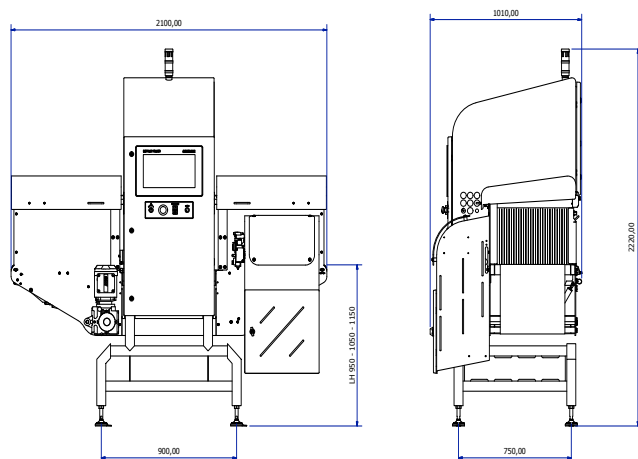


The X36 X-ray System With Advanced Dual Energy Technology

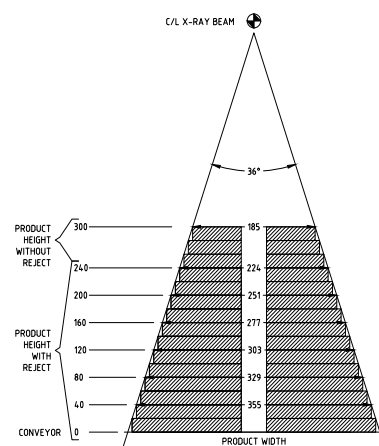
Introducing the DXD+ dual energy detector, which can be fully integrated into the X36 X-ray system. Capable of detecting hard-to-find contaminants, this highly advanced technology supports brand protection and compliance, even in the most challenging applications.

Our flexible and customizable solutions can increase production productivity by removing process waste.

Technical Details



X36 Series - 2100 millimeters long option



X36 Series beam diagram with 400 millimeters scan width

Specification Table

Feature	Specifications
Conveyor Speed	DXD+ Typical line speeds 10-45* m/min (dependent on product dimensions)
Lane Configurations	Single or multi-lane applications
Throughput Rate	Up to 500 products per minute (dependent on product dimensions)
X-ray Detector	300, 400 and 500mm - 0.4mm diode size
X-ray Generator	420W, 84kV, 5.0mA beryllium tube
X-ray Beams	Single vertical beam
X-ray Emissions	< 1uSv/hr
X-ray Protections	Fully contained emissions within construction, lightweight lead-free blue curtains at tunnel apertures
Cooling Method	Radiator Pump and Air Conditioner
Operating Humidity	Up to 90% RH
Operating Temperature	5 – 25°C
Power Supply	208 - 240 Vac, 1 phase, 50-60Hz, 10A Max 100 - 120 Vac, 1 phase, 50-60Hz, 16A Max
Pneumatic Supply	6 Bar(g) clean air supply required for air operated reject system
Casing Material	304 stainless steel
Finish	180-240 grit brushed on main components
Ingress Protection	IP65 as standard, IP69 as an optional upgrade
Operating Height	750mm, 850mm, 950mm, 1050mm or 1150mm (+/- 50mm)
System Conveyor	FDA and EU food use approved TPU conveyor belt, 0.55kW motor unit, 60mm diameter roll ends
System Length	2100mm or 2300mm options
Screen Display	15" capacitive touchscreen display (16:9 aspect ratio)
Reject Type	Pusher or Airblast options
Reject Collection	Front mounted lockable reject bin with vision window as standard
Operating System	Microsoft Windows 64bit
Connectivity Options	Ethernet connection available
Traceability Options	Full event log tracks changes of parameters, users and products
Guide Rails	Optional infeed or full length guide rails up to reject station. 10mm round bar style
UL Approved	Yes

* For applications over 45 m/min please get in contact for a product consultation

METTLER TOLEDO Group
Product Inspection Division
Safeline X-ray
Local contact: www.mt.com/contacts

Subject to technical changes
© 12/2024 METTLER TOLEDO. All rights reserved
PI-XR-DS-EN-122024

www.mt.com/xray-DXD

For more information